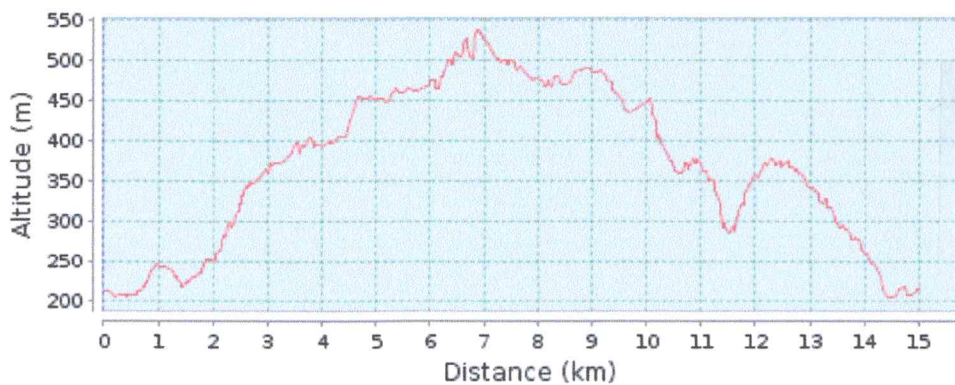
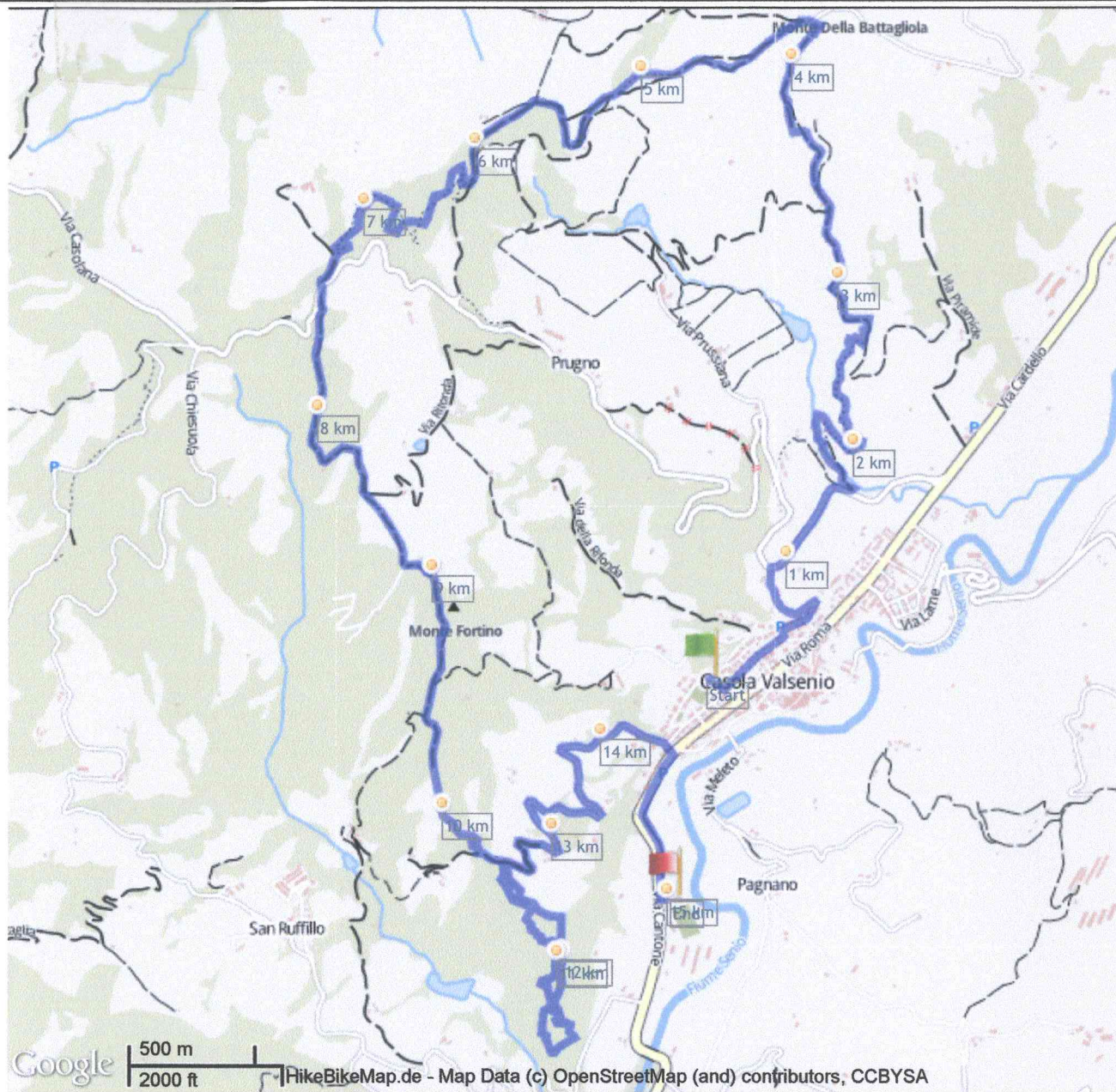




PERCORSO WALKING TRAIL APRILE 2013 NR.2 DA MASSIMOTABA - 15,01 KM - PERCORSO CIRCOLARE



Differenza altimetrica

333 Meter (Altezza da 205 Meter a 538 Meter)
Ascesa totale: 499 Meter, Discesa totale: 496 Meter